

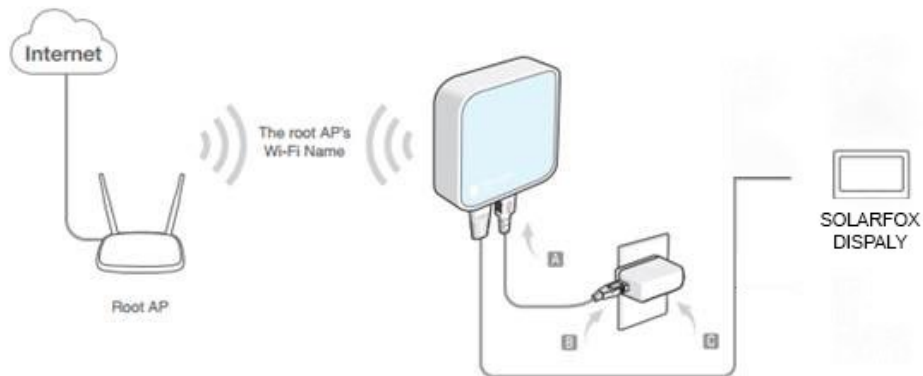


WIFI QUICK GUIDE

Optional WIFI extension for SF-100



OPTION A) WIFI Device PRE-MOUNTED



OPTION B) WIFI DEVICE AS AN ACCESSORY

Optional connection with extension to increase the signal strength

WIFI QUICK SETUP GUIDE

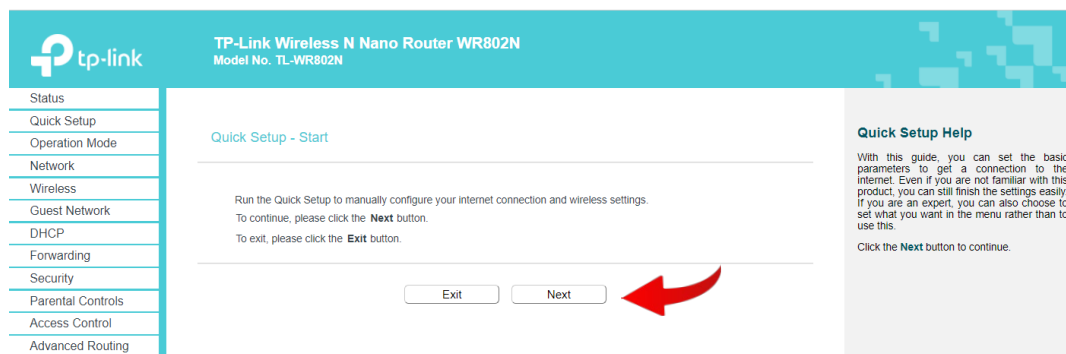
- 1) Connect the TP-Link Nano Router WR802N to the power supply and connect it to the power grid.
- 2) Wait 10 seconds until the green light is blinking.
- 3) Open your WIFI settings on your phone or computer:

- 1) Choose the WIFI network **"TP-Link_XXXX"**
- 2) Enter the Password which is stated on the backside of the TP-Link Router. The password is a 8-digit number.



- 4) Ensure that your device is connected to the TP-Link WIFI only and that no other connection (LAN) is still connected. Open your web browser (Chrome) and enter the following URL: <http://tplinkwifi.net> or 192.168.1.1. Once your device is connected, set an individual password. We recommend "solarfox24"

In the Quick-Setup- Start page, click on **"Next"**.



3) Choose: **Client** and click on Next.

TP-Link Wireless N Nano Router WR802N
Model No. TL-WR802N

Quick Setup - Operation Mode

Choose Operation Mode:

- ☐ Wireless Router
- ☐ WISP
- ☐ Access Point
- ☐ Range Extender
- ☒ **Client**

Act as a "Wireless Adapter" to connect your wired devices(e.g Blu-ray player,smart TV) to existing Wi-Fi

Back Next

Operation Mode Help

Wireless Router(Default): In this mode, the device enables multiple users to share the Internet connection via Ethernet port. The LAN devices share the same IP from ISP through Wireless port. While connecting to Internet, the Ethernet port works as a WAN port.

WISP: In this mode, the device enables multiple users to share Internet connection from WISP. The LAN port devices share the same IP from WISP through Wireless port. While connecting to WISP, the Wireless port works as a WAN port. The Ethernet port acts as a LAN port.

Access Point: In this mode, this device can be connected to a wired network and transform the wired access into wireless that multiple devices can share together, especially for a home, office or hotel where

4) Choose the related Wifi-Network you want to connect to and click on **"Connect"**:

TP-Link Wireless N Nano Router WR802N
Model No. TL-WR802N

AP List

The scanned APs are as follows

AP numbers: 10 Refresh

ID	BSSID	SSID	Signal strength	Channel	Encryption	Connect
1	FC:EC:DA:1A:C4:AA	TP-LINK_9FDB898038	79	6	WPA2-PSK/AES	Connect
2	DE:9F:DB:89:80:38	Solarfox_VPA2	76	1	WPA2-PSK/AES	Connect
3	EE:9F:DB:89:80:38	TP-LINK_9FDB898038	69	1	WPA2-PSK/AES	Connect
4	60:AA:EF:56:B7:73	TP-LINK_9FDB898038	68	7	WPA2-PSK/AES	Connect
5	DC:9F:DB:89:80:38	TP-LINK_9FDB898038	64	1	WPA2-PSK/AES	Connect
6	00:27:22:B5:C1:22	TP-LINK_9FDB898038	59	11	WPA2-PSK/AES	Connect
7	02:27:22:B5:C1:22	TP-LINK_9FDB898038	58	11	WPA2-PSK/AES	Connect
8	12:27:22:B5:C1:22	TP-LINK_9FDB898038	56	11	WPA2-PSK/AES	Connect

Wlan Site Survey Help

Note: The information of APs which you could connect to is shown on this page. Set as follows:

- First, find the line where the network you want to connect lay on
- Then, check the "connect" at the end of that line.
- Now, the target network's SSID is filled in the correct place on the Wlan configure page automatically.

Note: Click the Refresh button to update the AP list.

Click the Back button to return Operation Mode selection page.

5) Enter the WIFI password and click on **"Next"**:

TP-Link Wireless N Nano Router WR802N
Model No. TL-WR802N

Quick Setup - Wireless

SSID(to be bridged): YOUR WIFI NAME

MAC Address(to be bridged): DE:9F:DB:89:80:38 e.g. 00:1D:0F:11:22:33

Scan

Key Type: WPA2-PSK

Encryption: AES

Password:

Back Next

Wireless Help

Range Extender - In Range Extender mode, the wireless repeater relays signal between its stations and the root AP for greater wireless range.

- Wireless Name of Root AP** - Enter the name of a remote AP (also called the SSID) that you want to access. Click the Back button back to the AP list page, you can choose another one of searching results to fill in this field.
- MAC Address of Root AP** - Enter the MAC address of AP that you want to access. When you use the survey function in previous page to fulfill the Wireless Name of Root AP, this field will be filled in automatically.
- Wireless Name of Range Extender** - This field determines the Local AP SSID. You can set the same SSID with the Root AP's, or

6) Keep all presented settings and click on **Next**.

TP-Link Wireless N Nano Router WR802N
Model No. TL-WR802N

Quick Setup - Network Setting

LAN Type: Smart IP(DHCP)

Note: The IP parameters cannot be configured if you have chosen Smart IP(DHCP)

(In this situation the device will help you configure the IP parameters automatically as you need.)

IP Address: 192.168.0.1

Subnet Mask: 255.255.255.0

We recommend you configure this AP with the same IP subnet and subnet mask, but different IP address from your root AP/Router.

DHCP Server: ☒ Enable ☐ Disable

Back Next

Network Settings Help

You can configure the IP parameters of LAN on this page.

- Type** - Choosing Smart IP to get IP address from remoter DHCP server, or choosing Static IP to config IP address manually.
- IP Address** - Enter the IP address of your system in dotted-decimal notation (factory default).
- Subnet Mask** - An address code that determines the size of the network. Normally, 255.255.255.0 is used as the subnet mask.
- DHCP Server** - Enable or Disable the server. If you chose Smart IP type, the selection will be disabled. If you disable the Server, you must have another DHCP server within your network or else you must configure the IP address of the computer manually.

Note: If you change the IP address, you must use the new IP address to login the system.

7) Setup is complete, click on **Finish** to confirm the settings.

TP-Link Wireless N Nano Router WR802N
Model No. TL-WR802N

Quick Setup - Review Setting

Congratulations! The settings is finish, please click finish button to make it work. For detailed settings, please click other menus if necessary.
Changing work mode should be reboot!

Confirm the configuration you have set. If anything wrong, please go Back to reset.
It's recommended to take a note of these settings that you'll need later for reference.

Wireless Settings

Operation Mode: Client

Wireless Channel: 1

Name(SSID) of Root AP: **YOUR WIFI NAME**

Wireless Security Mode: WPA2-PSK

Wireless Password: **YOUR WIFI PASSWORD**

LAN Settings

Default Access: http://tplinkwifi.net

LAN Type: Smart IP(DHCP)

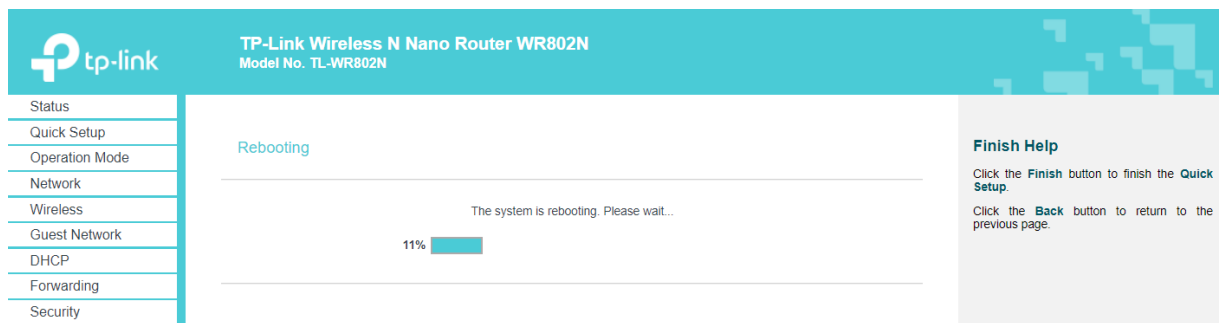
Back Finish

Finish Help

Click the **Finish** button to finish the **Quick Setup**.

Click the **Back** button to return to the previous page.

- 8) System will reboot. Once the system has rebooted you will lose connection on your device. Now you can connect the TP-Link device with the Ethernet cable to the minicomputer of your SOLARFOX-Display.
- Insert a USB keyboard into the SOLARFOX control computer to open the setup. Follow the steps displayed there and select "**LAN**" under Network settings and complete the setup.



- 9) WIFI installation successfully completed. Please connect a USB-Keybaord to the Solarfox® mini computer and start the Setup-Process of the Display configuration.

1. FAQ (Frequently Asked Questions)

Q1. What can I do if the login page does not appear?

- A1. If the computer is set to a static or fixed IP address, change it to obtain an IP address automatically from the modem router (DHCP).
- A2. Verify that <http://tplinkwifi.net/> is correctly entered in the URL bar of the browser.
- A3. Use a different web browser and try again.
- A4. Reboot your router and try again.
- A5. Disable and enable the active network adapter.

Q2. What can I do if the DSL LED does not turn on?

- A1. Check your cables and make sure they are all plugged in correctly, including the telephone lines and power adapter.
- A2. Get in touch with the responsible IT-Admin of the facility.
- A3. Remove the DSL splitter, directly connect the router to the phone jack and then reconfigure the router by following the instructions in this Quick Installation Guide.
- A4. Contact your ISP to verify if the DSL line is in good status.
- A5. If you have tried all the suggestions above and the problem still exists, contact our Technical Support.

Q3. What can I do if I cannot access the Internet?

- A1. Ensure that the telephone and Ethernet cables are plugged in correctly.
- A2. Contact the responsible IT-Admin to ensure that the network has no MAC address filter.
- A3. Try to log into the router using the default address at <http://tplinkwifi.net/>. Or use a different device to obtain an IP address automatically from the router.
- A4. Consult your ISP and make sure all the VPI/VCI (or VLAN ID), Connection Type, account username and password are correct. If they are not, replace them with the correct settings and try again.
- A5. Please contact the responsible IT-Admin of the facility or our Technical Support if the problem still exists.

If you are still encountering difficulties setting up the WiFi connection, please get in touch with the network administrator with these instructions. Once the WiFi device is set up, you can simply connect it to the Solarfox Display and set up the LAN connection with the setup assistant via a USB keyboard.

DO YOU NEED DIRECT ASSISTANCE?

TP-LINK IRELAND

Tel: 0818 229 000

Fee: *Calls from Irish landline generally cost 5.19 cent/min (1.99 cent/min for evening and weekend).
*Calls from Irish mobile phones cost depends on mobile network.
*Day rates refer to 8am-6pm Mon to Fri; Evening rates refer to 6pm-8am Mon to Fri; Weekend rates refer to midnight Friday to midnight Sunday; 24 hours a day, 7days a week (Ireland)

E-mail: support.ie@tp-link.com

Service Time: 24 hours a day, 7 days a week

NOTE: All phone cost is only charged at standard domestic call rate by customer's telephone company or provider.

SOLARFOX®

Tel: +49 6058 91638 10

Fee: *Standard phone number in Germany. Only regular charges according to your telephone provider apply.

Online-Char: <https://www.solar-fox.com/support>

E-mail: support.@solar-fox.com

Service Time: Mo. - Fr. 8:00 - 12:00 | 13.00 - 17:00 (CET)