

SOLARFOX® SF-400 SERIES - TECHNICAL DATA



GENERATION 2017 (NEW MODEL)

The SF-400-Series is equipped with innovative metal housing, ventilation, and heating. This way it is protected against humidity, moisture, heat, as well as vandalism and theft. The systems meet IP-65 / 54 protection regulations and can be used at temperatures from -20° to 35°C. The energy consumption is reduced via a time which can be adjusted individually for each day.

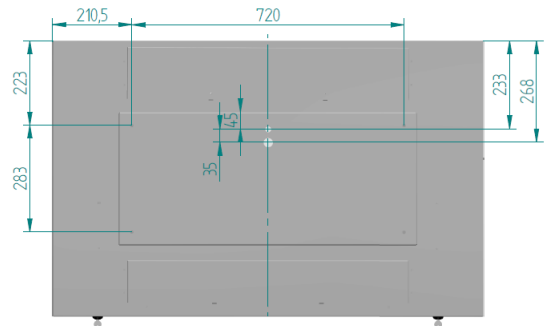
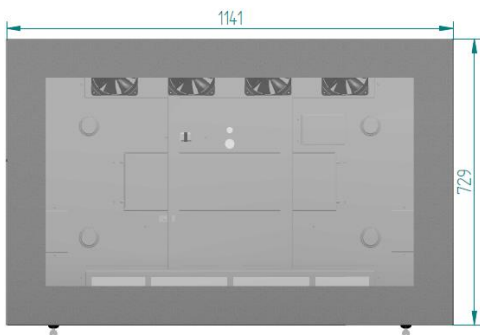
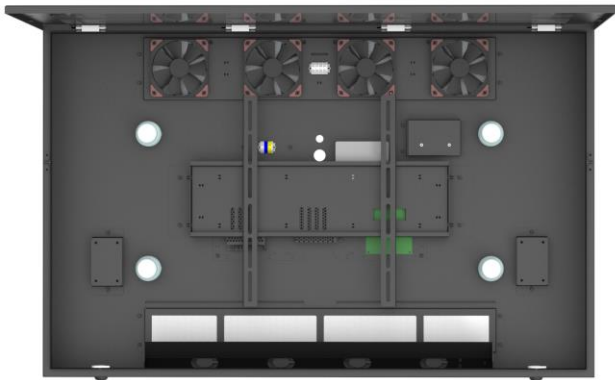
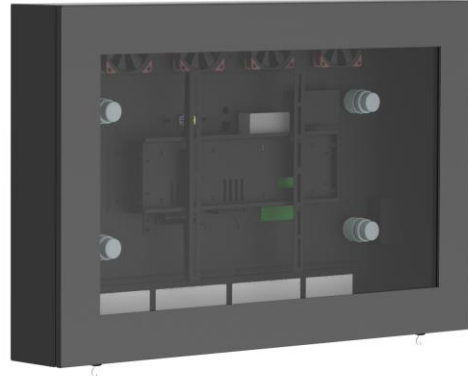
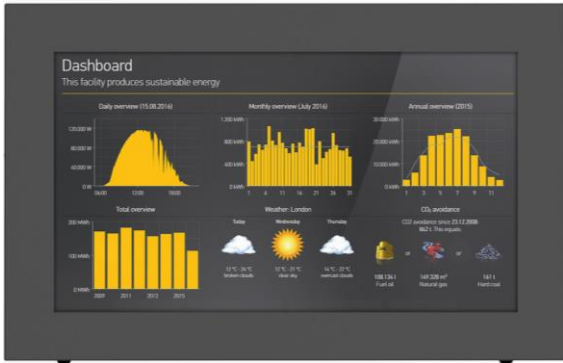
- IP65 / IP54 outdoor enclosure
- LED display
- Laminated safety glass (VSG)
- built-in control computer SC-2000 with software
- cable and accessories
- internet connection (LAN, WIFI, 3G)
- comfortable online management
- individual content and design

Product description	SF-400 32"	SF-400 43"	SF-400 55"
Screen diagonal	81 cm (32")	109 cm (43")	140 cm (55")
Dimensions (LxTxH) enclosure / housing	89,8 x 59,2 x 17,0 cm	114,0 x 73,0 x 17,0 cm	141,0 x 88,0 x 17,0 cm
Colour	DB 703 (anthracite)	DB 703 (anthracite)	DB 703 (anthracite)
Coating housing	fine structure	fine structure	fine structure
Power consumption during operation (monitor)	35-50 Watt	45-65 Watt	55-70 Watt
Operating temperature	-20 °C bis +35 °C	-20 °C bis +35 °C	-20 °C bis +35 °C
Protection class	IP65 (Front) / IP54(Backside)	IP65 (Front) / IP54(Backside)	IP65 (Front) / IP54(Backside)
Energy efficiency class (LED monitor)	B	B	B
Typ. energy consumption housing	Ø 60 – 70 Watt	Ø 65 – 75 Watt	Ø 70 – 80 Watt
Energy consumption housing (min/max, all components on))	Min. / Max: 25 / 275 Watt	Min / Max: 25 / 290 Watt	Min / Max: 30 / 305 Watt
Weight housing	31,8 Kg	52,4 Kg	74,2 Kg
Technology	IPS	IPS	IPS
LCD backlight technology	LED	LED	LED
Resolution	1920 x 1080	1920 x 1080	1920 x 1080
Service life	30.000 h	30.000 h	30.000 h
Brightness	350 cd/m ²	350 cd/m ² (700 cd/m ²)	350 cd/m ²
Viewing angle	178 degrees	178 degrees	178 degrees
Operating time	18/7	18/7	18/7
Display format	1080p (FullHD)	1080p (FullHD)	1080p (FullHD)
Video input formats	720p, 1080i, 1080p	720p, 1080i, 1080p	720p, 1080i, 1080p
Aspect ratio of the image	16:9	16:9	16:9
Video interface	HDMI	HDMI	HDMI
Other Interfaces	1x DVI, 1x VGA (HD-15), RJ 45 Ethernet (LAN), WiFi*	1x DVI, 1x VGA (HD-15), RJ 45 Ethernet (LAN), WiFi*	1x DVI, 1x VGA (HD-15), RJ 45 Ethernet (LAN), WiFi*
Time switch (switching on and off)	individual day timer	individual day timer	individual day timer
TV tuner	No tuner	No tuner	No tuner
Speaker system	without speakers	without speakers	without speakers
Speaker output	Yes, 2 ports	Yes, 2 ports	Yes, 2 ports
USB port	Yes, 2 ports	Yes, 2 ports	Yes, 2 ports
Remote control	Remote control	Remote control	Remote control
Power supply	230 V	230 V	230 V
Environmental protection standards (LED monitor)	ENERGY STAR	ENERGY STAR	ENERGY STAR
Manufacturer's warranty	3-year warranty	3-year warranty	3-year warranty
Packaging (L x D x H)	79.5 x 12 x 50.7 cm	104 x 11.5 x 64.8 cm	137.5 x 17 x 87.6 cm
Packaging weight	38,8 kg	61,4 kg	109,2 kg

* optional

SOLARFOX® SF-400 SERIES

Innovative metal housing (IP 65 / IP 54)



DIMENSIONS SF-400 43"